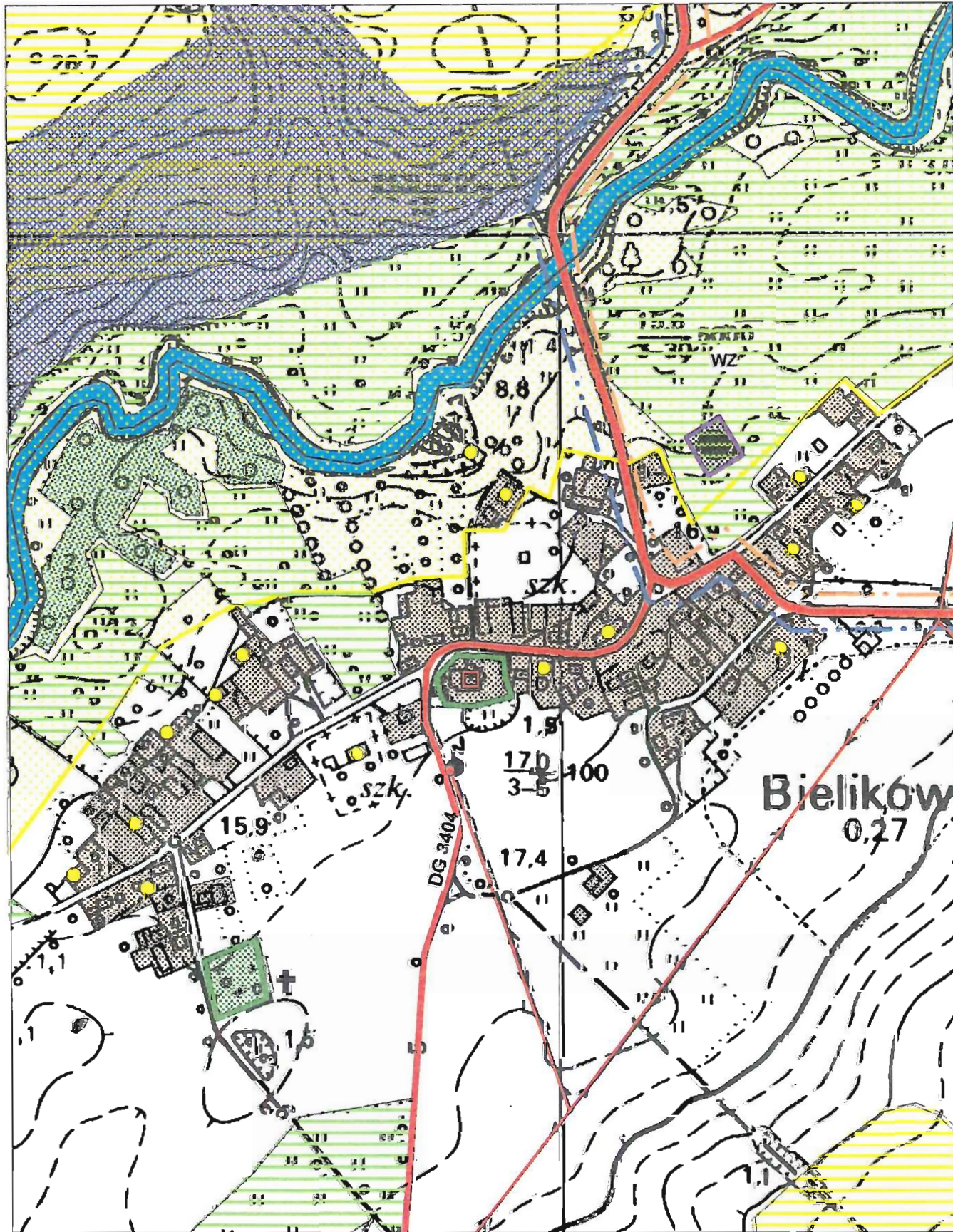
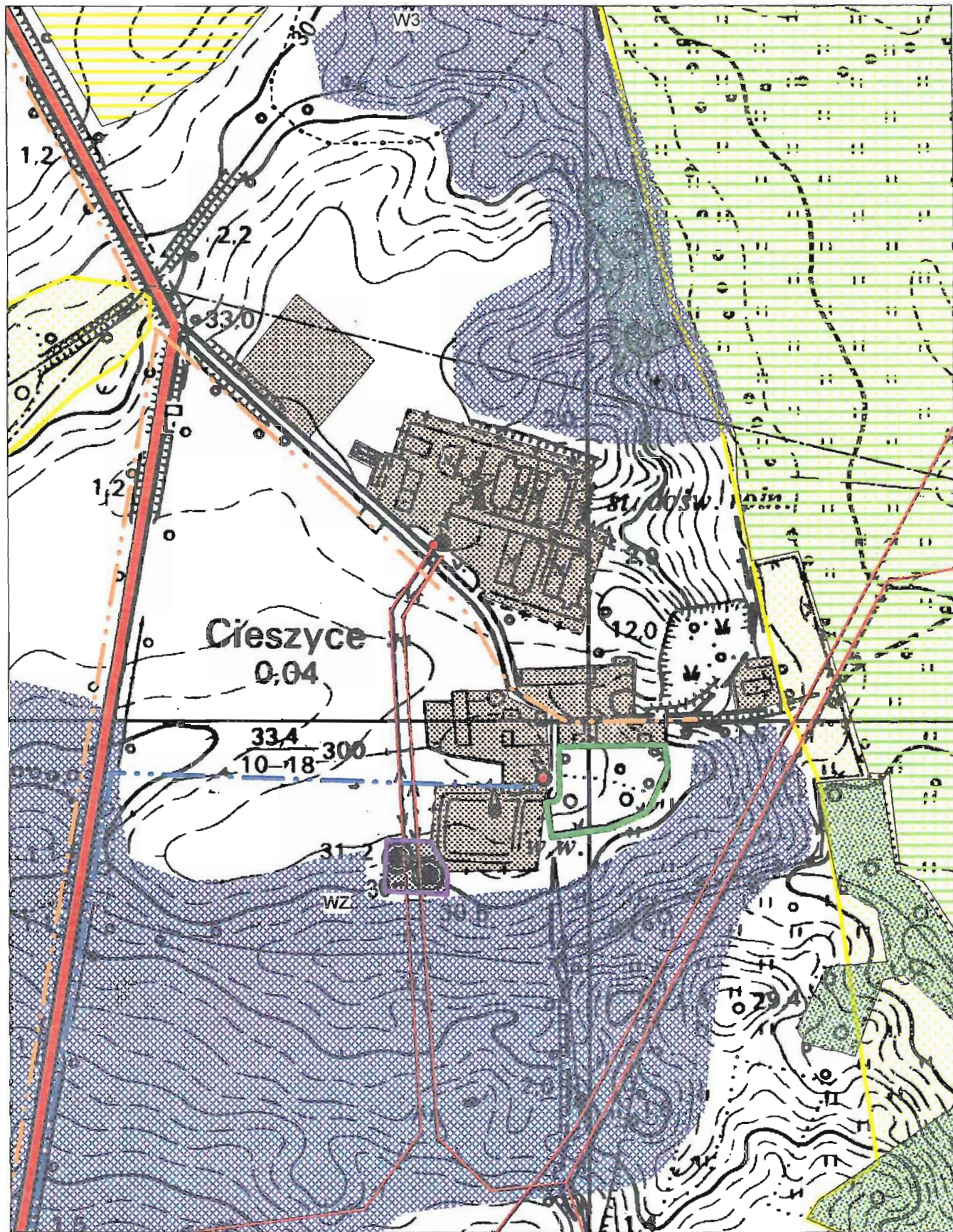


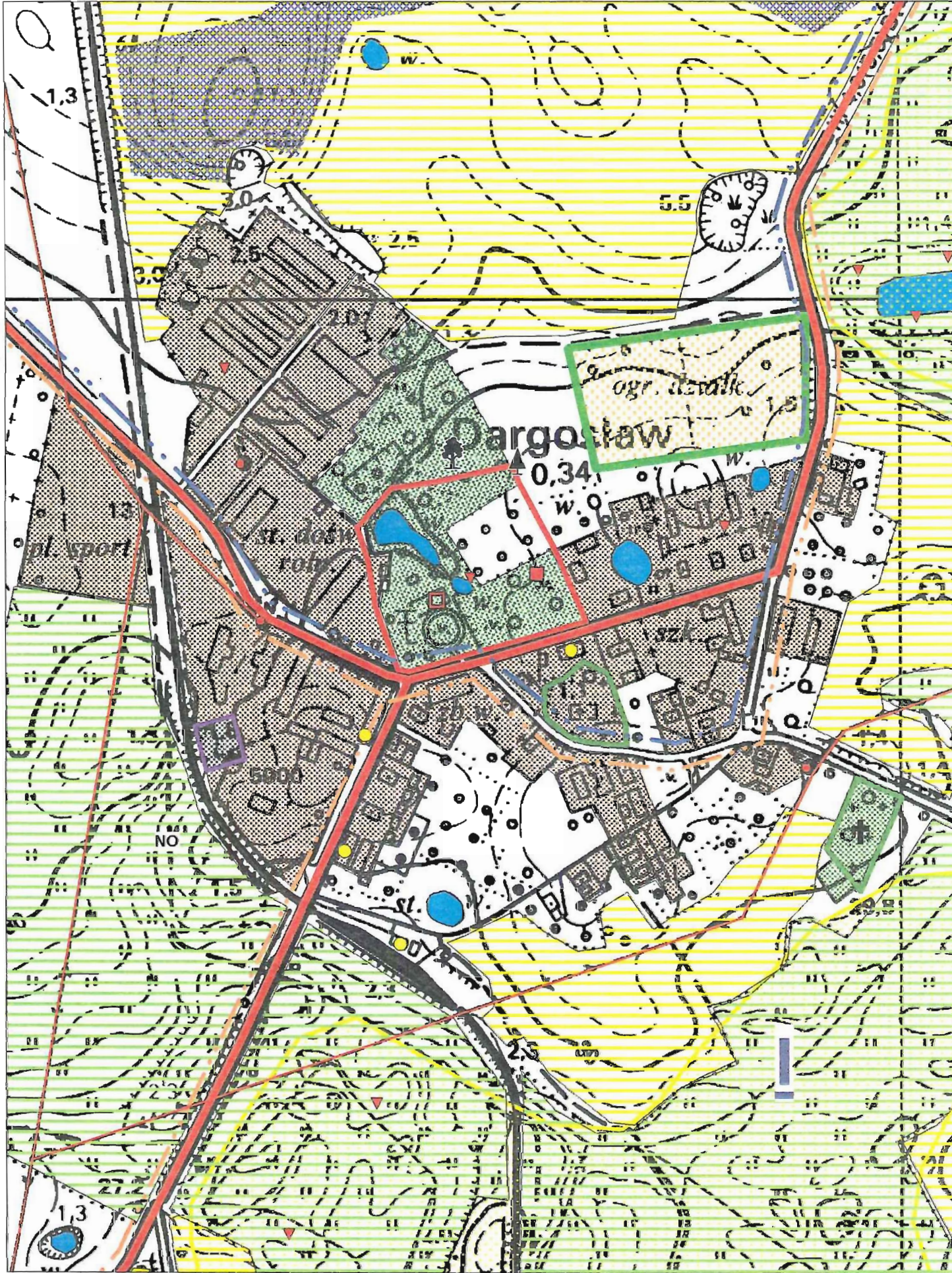
V.1. 3. UWARUNKOWANIA ZAGOSPODAROWANIA PRZESTRZENNEGO - MIEJSCOWOŚCI



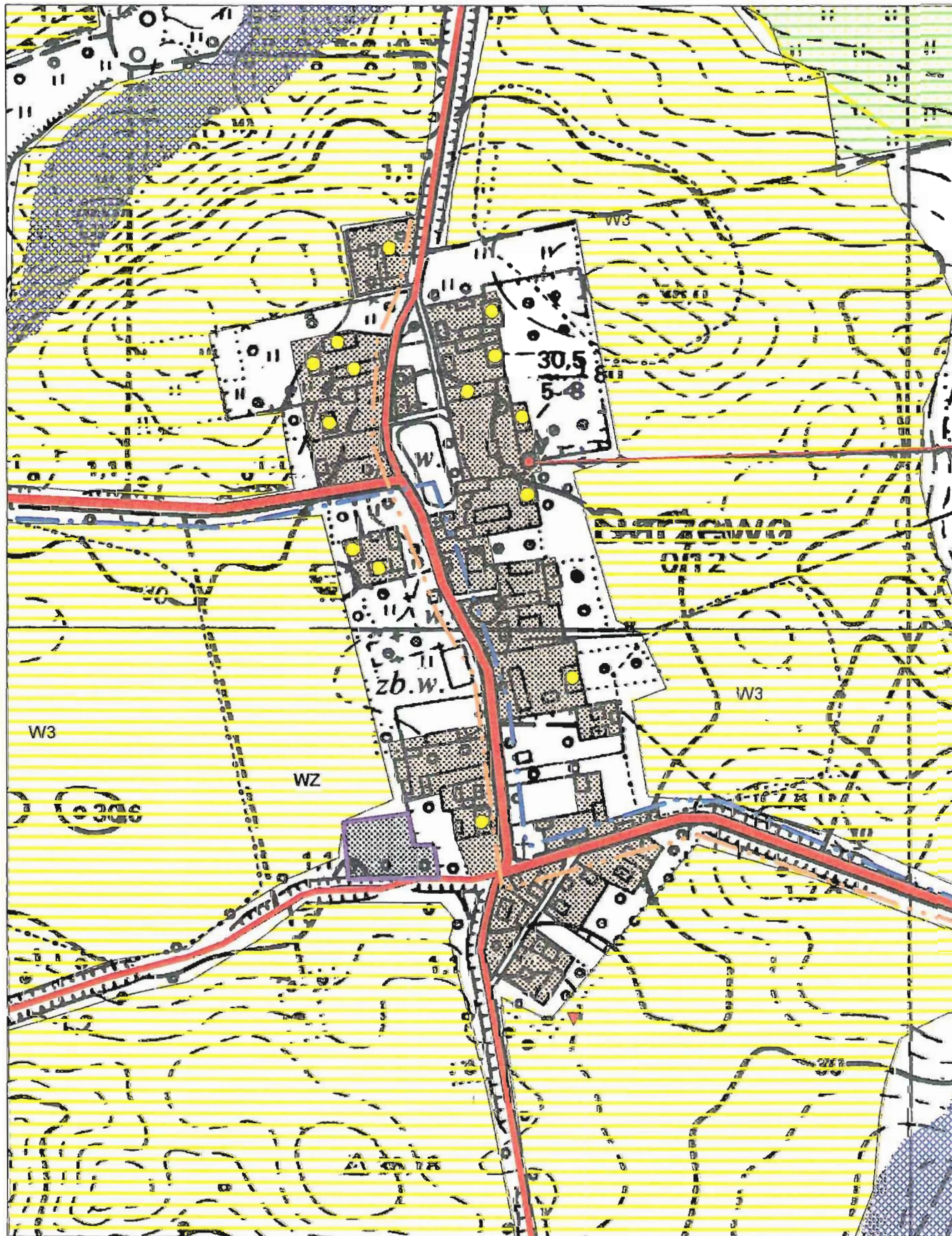
BIELIKÓWO



CIESZYCE

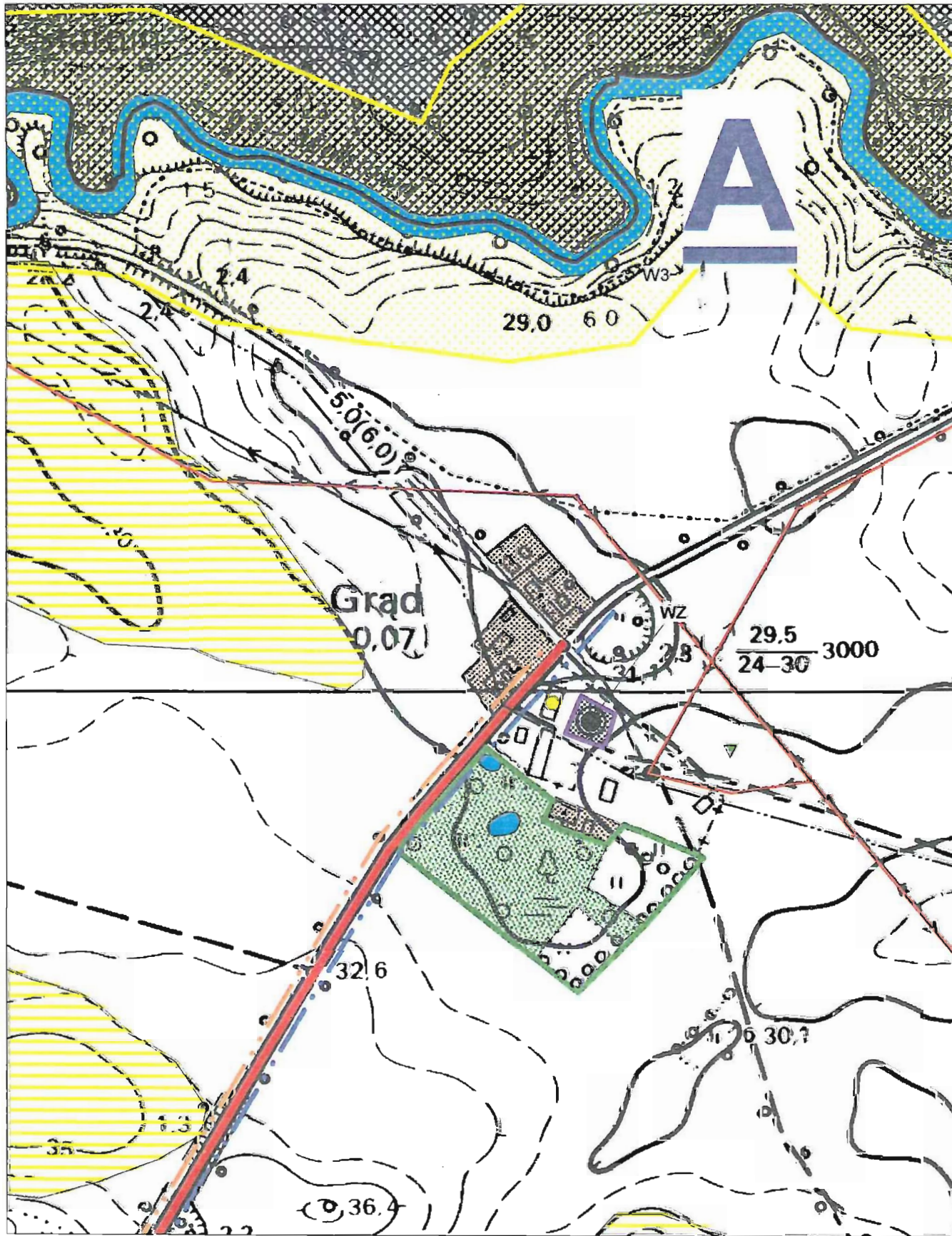


DARGOSŁAW

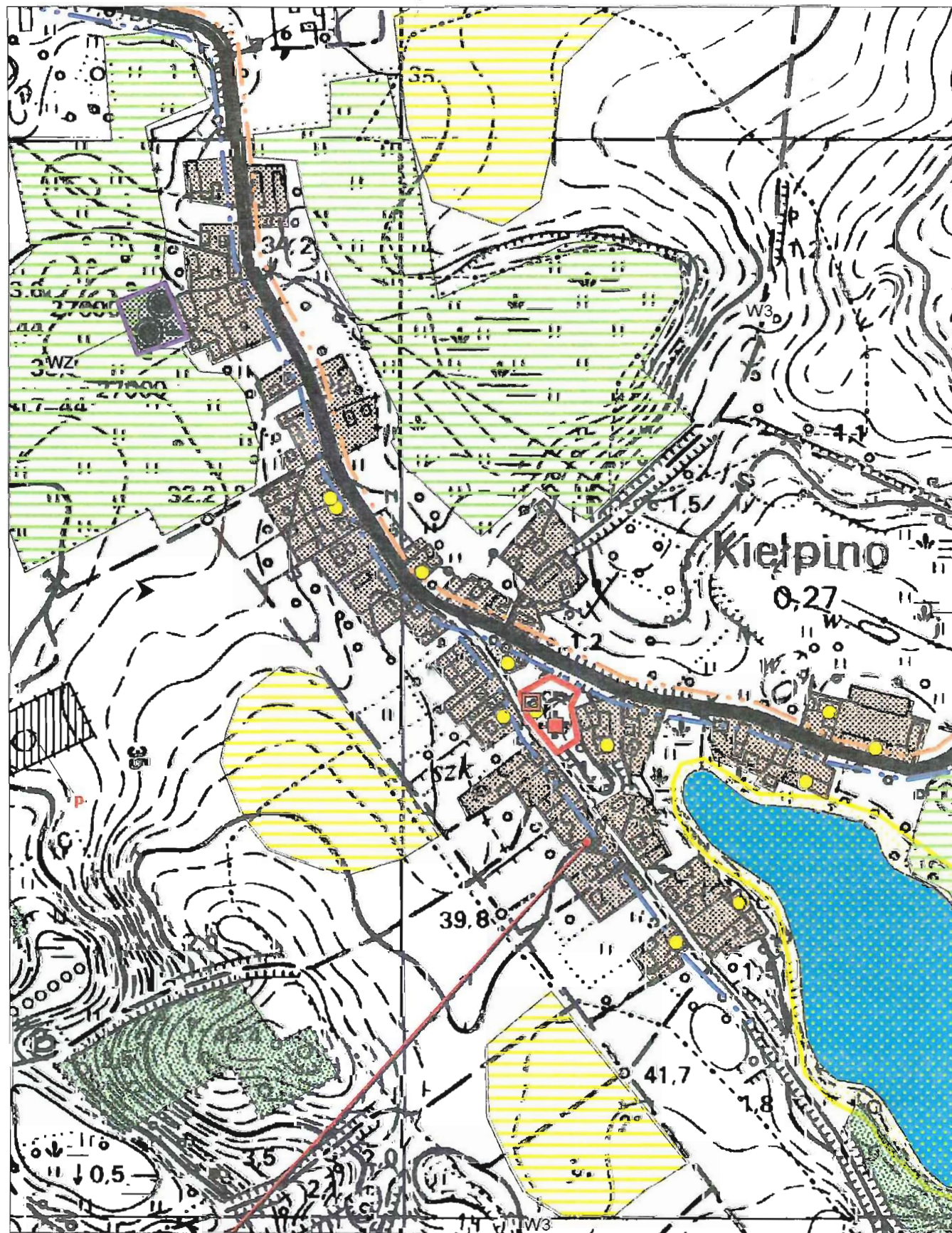


DARŻEWO

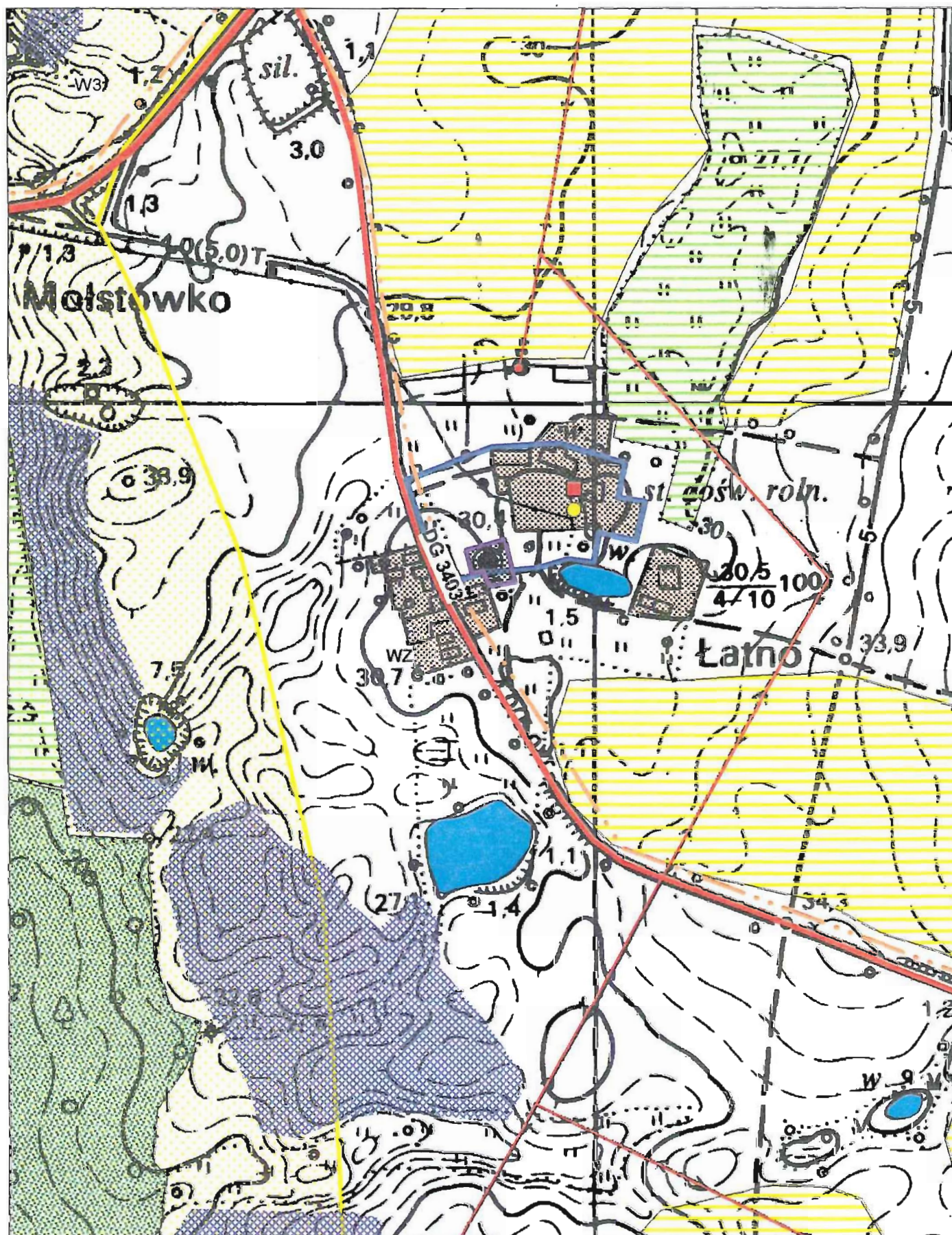
STUDIUM UWARUNKOWAŃ I KIERUNKÓW ZAGOSPODAROWANIA PRZESTRZENNEGO GMINY BROJCE



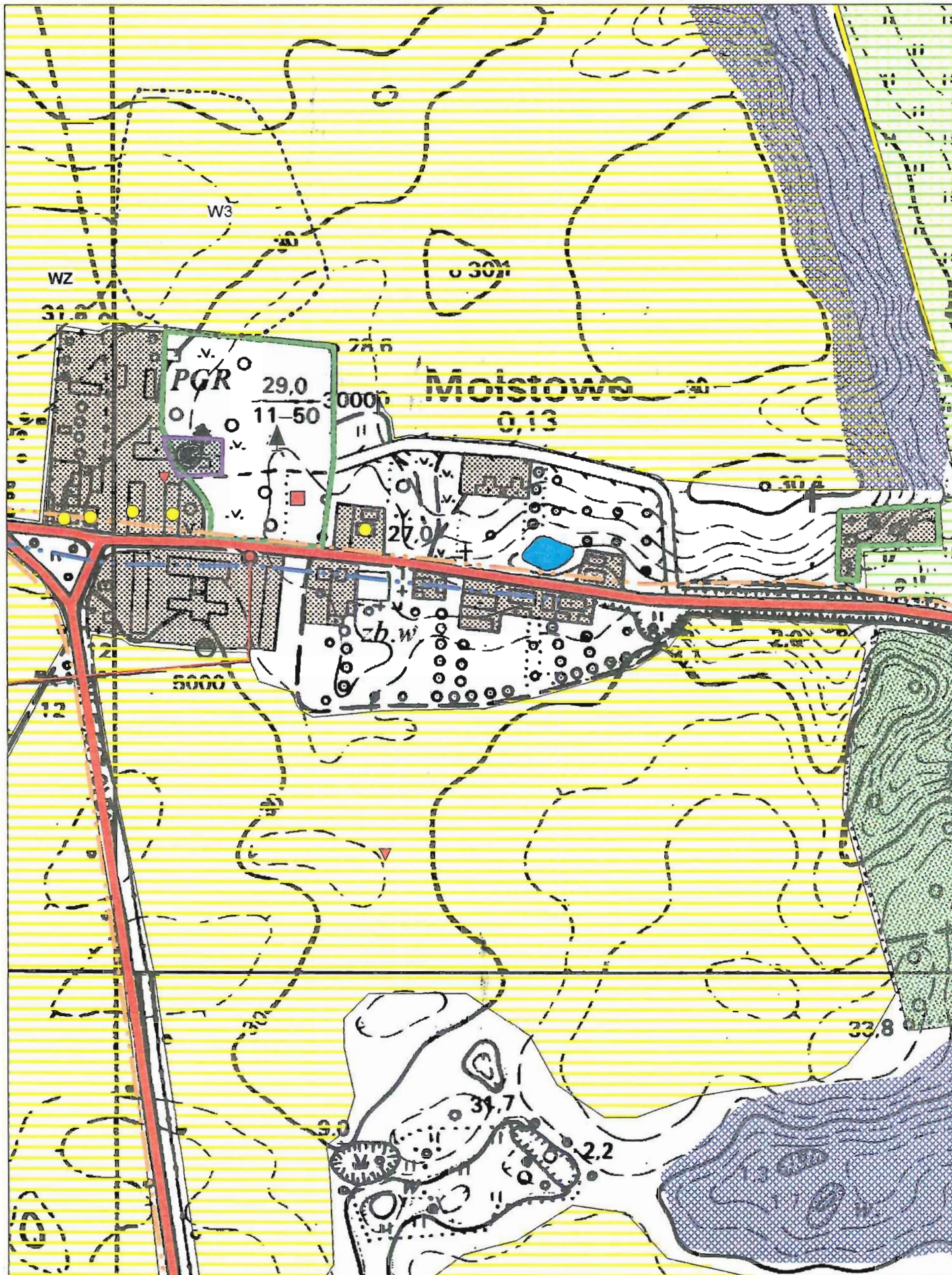
GRAD



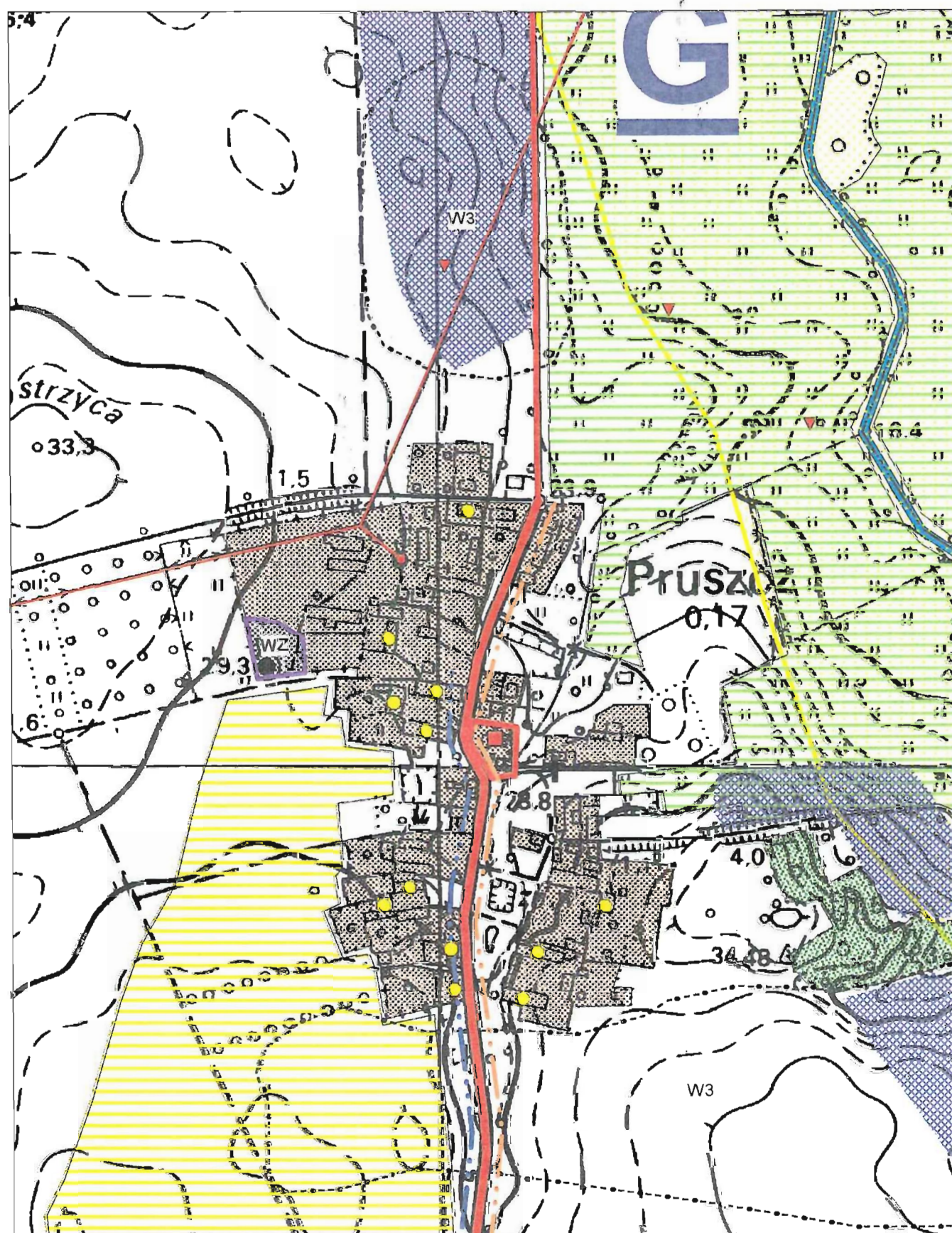
KIELCINO



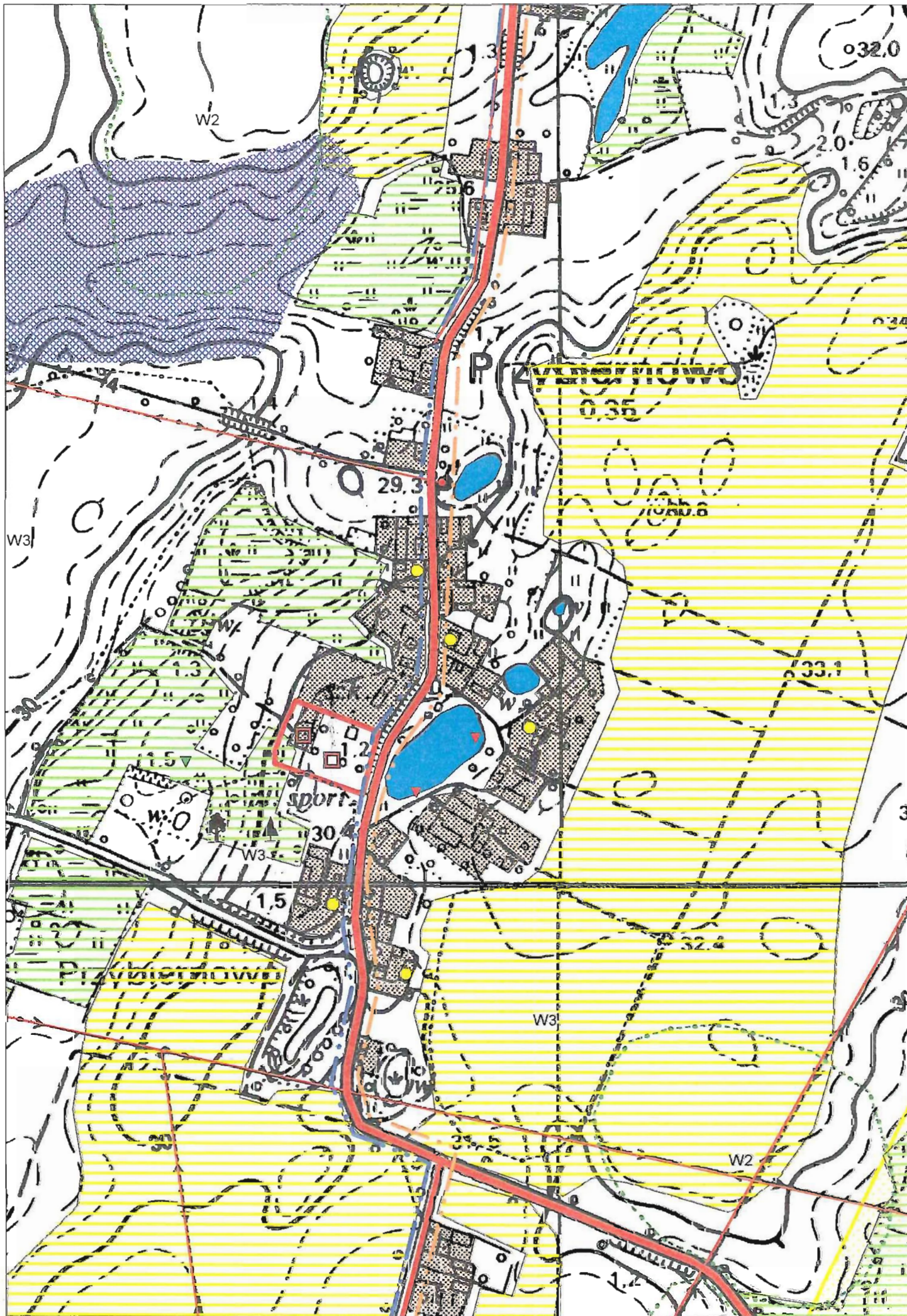
ŁATNO



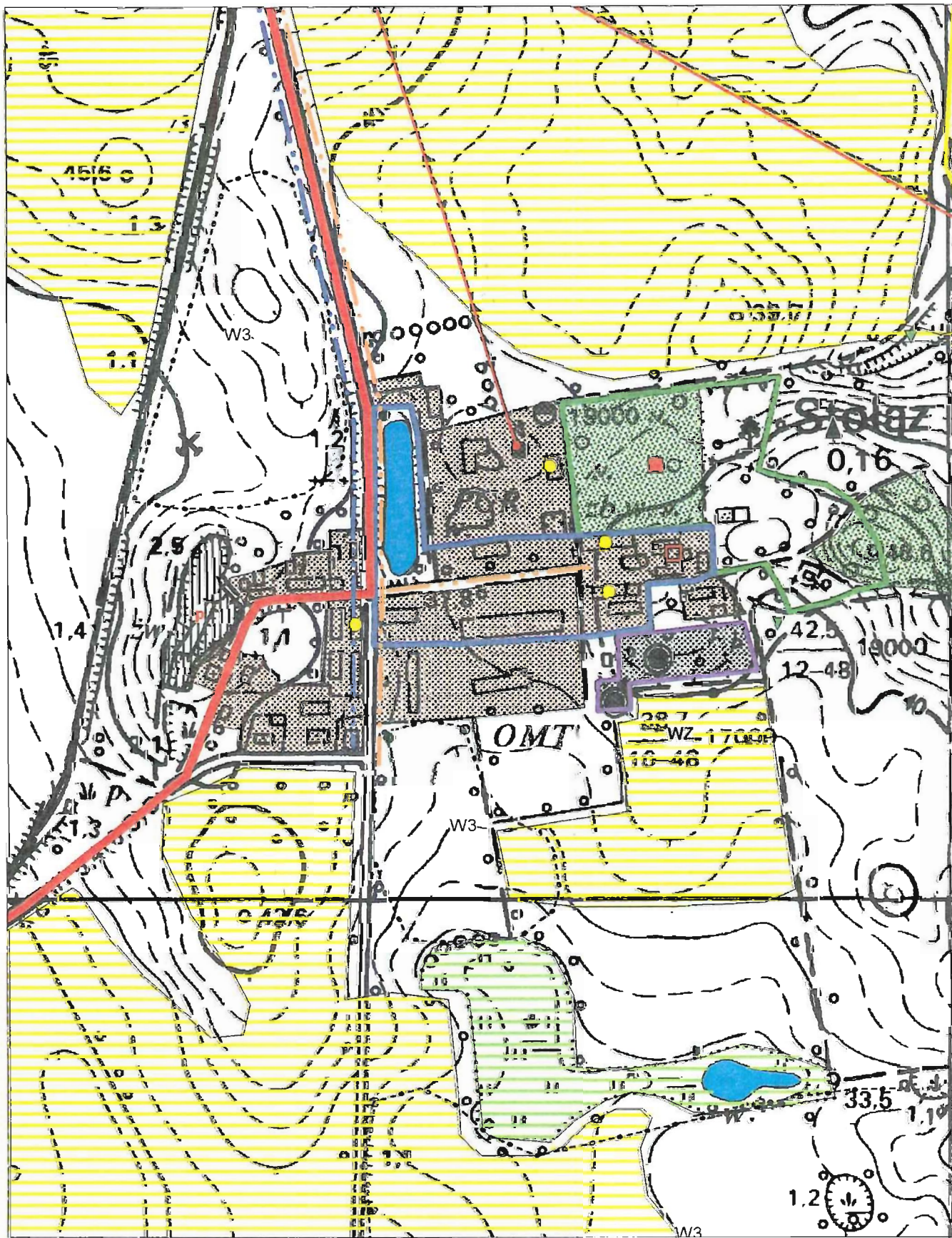
MOŁSTOWO



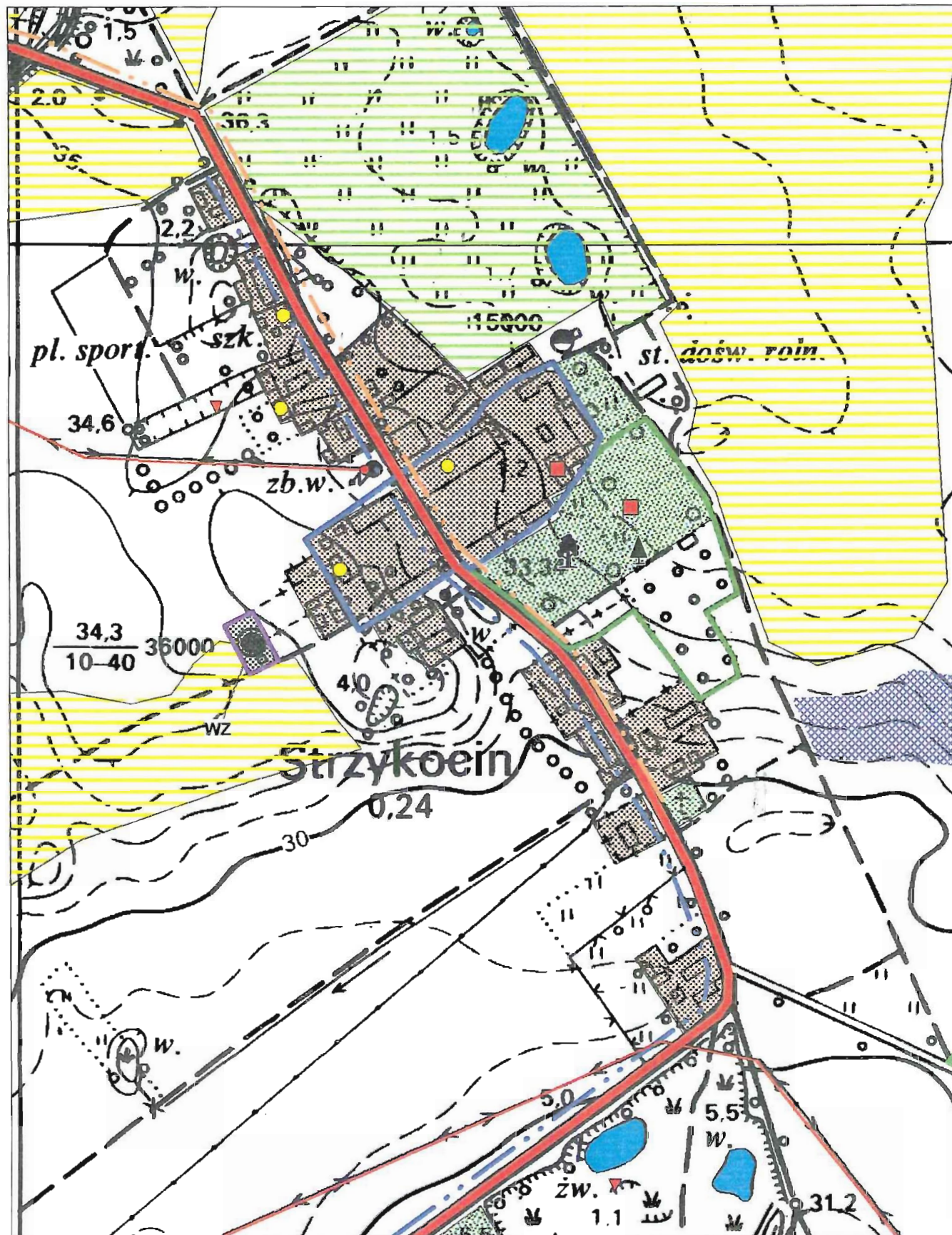
PRUSZCZ



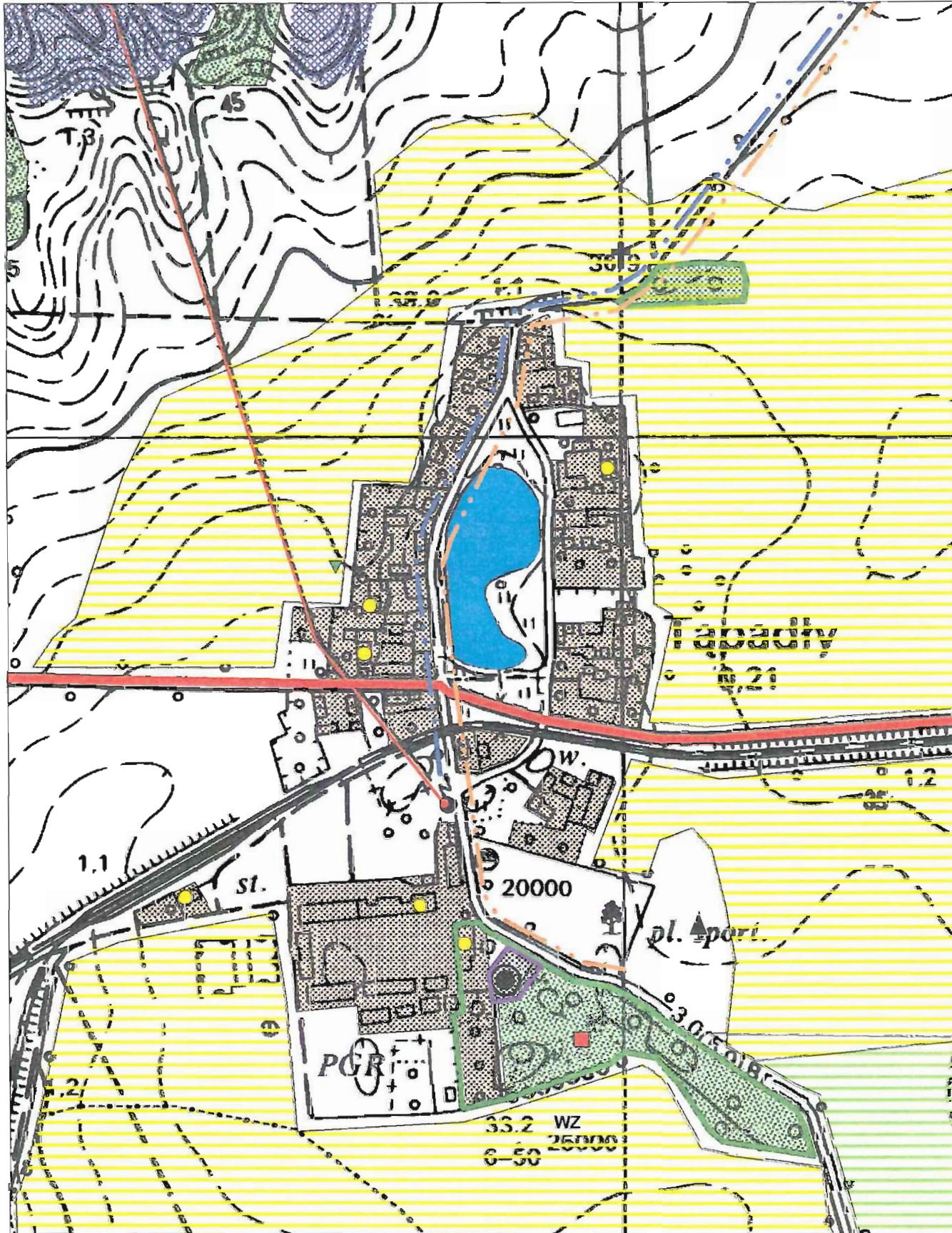
PRZYBIERNOWO



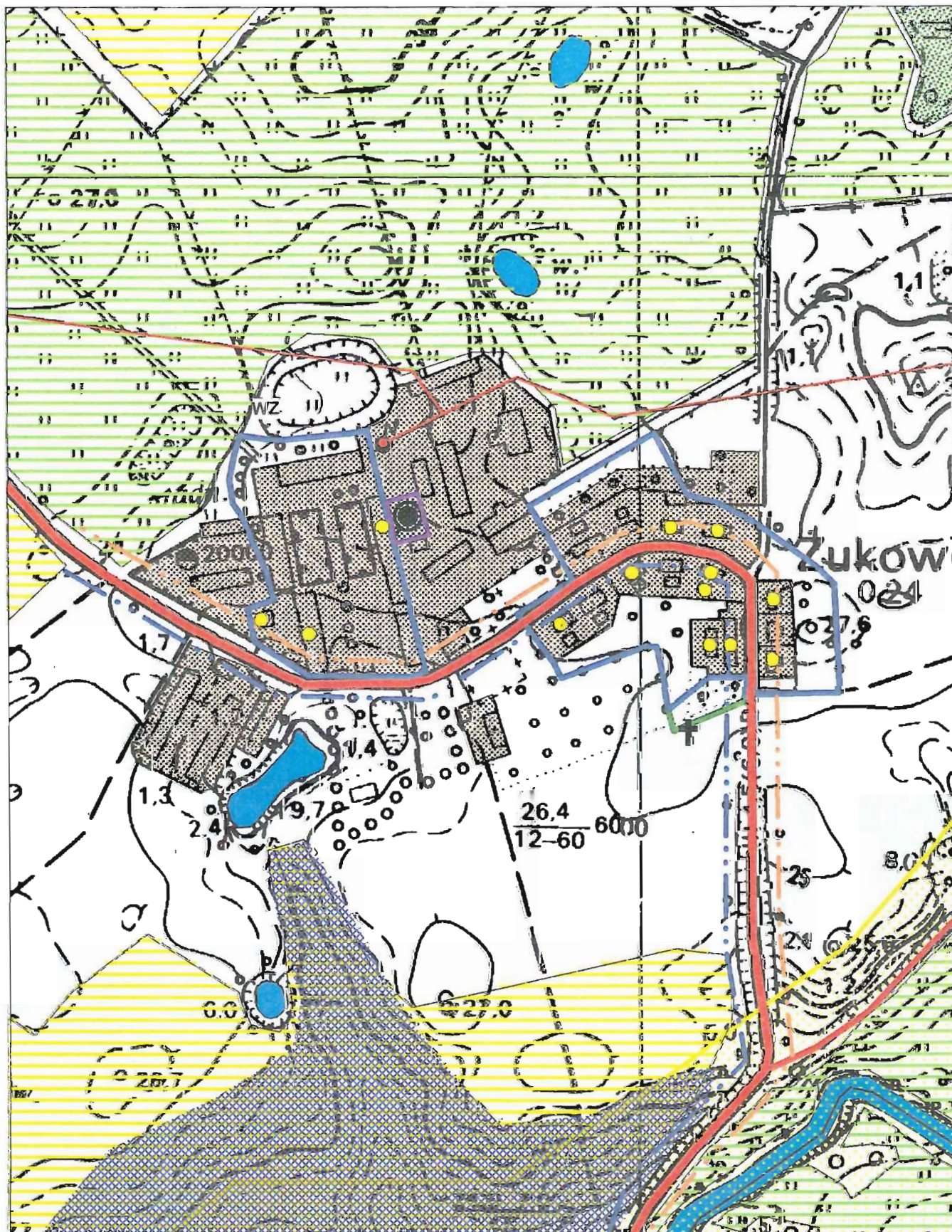
STOLAŻ



STRZYKOCIN



TĄPADŁY



ŻUKOWO